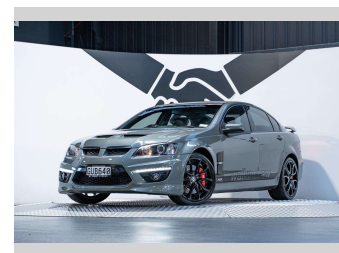
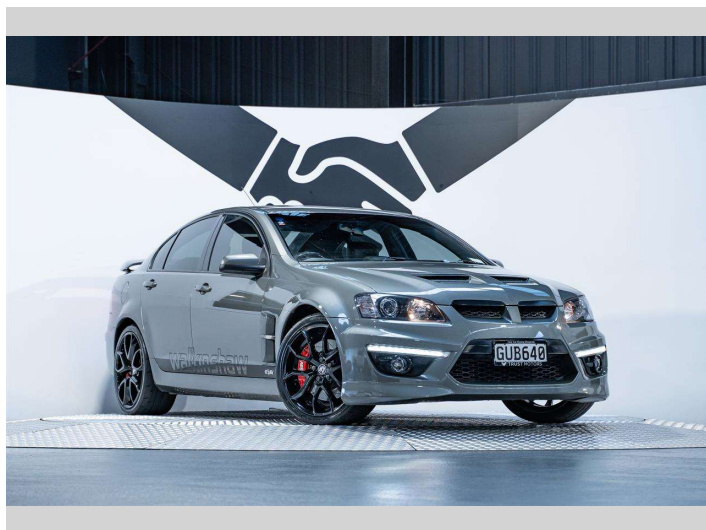



2011 Holden HSV Clubsport R8 6.2L Manual



Purchase Price **\$64,990**
Includes GST, Registration & Licensing

Finance may be available on this vehicle. Ask one of our friendly staff for more information.



Gain peace of mind with Mechanical Breakdown Insurance. **Ask us how.**



Top features

None Listed

Body Style
4 door, Sedan

Odometer
110,700 km

Engine
6162 cc, Internal Combustion

Fuel Type
Petrol

Transmission
Manual, Rear Wheel

Wheels
-

VIN
6G1EX5EW0BL548041

Interior
Black

Safety



Based on 2023 UCSR rating for 06-13 models

Reg No.
GUB640

Ext Colour
Alto Grey

History
NZ New, 5 owners

Seats
5 seats, Leather

CO2 Emissions
☆☆☆☆☆☆
396 grams/km

Energy Economy
☆☆☆☆☆☆



Annual fuel cost of \$6,470
16.5L per 100km

Cost per year is an estimate based on petrol price of \$2.80 per litre and an average distance of 14000 km. Emissions and Energy Economy figures standardised to 3P WLTP.

Stock ID: 5411



Trust Motors Ltd | Phone 09 887 8668 | Email george@trustmotors.co.nz
10 Norman Spencer Drive, Papatoetoe, Auckland 2104, New Zealand
www.trustmotors.co.nz

4.92 | 1279 reviews