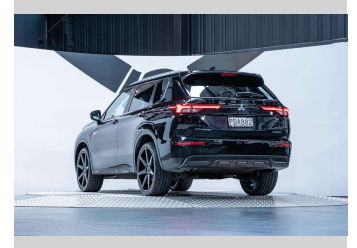


# 2022 Mitsubishi Outlander LS PHEV 2.4L 4WD



Purchase Price

**\$42,990**

Includes GST, Registration & Licensing

Finance may be available on this vehicle. Ask one of our friendly staff for more information.



Gain peace of mind with Mechanical Breakdown Insurance. **Ask us how.**



## Top features

None Listed

Body Style

**5 door, SUV / 4x4**

Odometer

**62,900 km**

Engine

**2360 cc, Plug-In Hybrid**

Fuel Type

**Plug-in hybrid**

Transmission

**Automatic, 4WD**

Wheels

-

VIN

**JMFXDGN0WNZ000231**

Interior

**Grey**

Safety



Based on 2022 ANCAP rating for 21+ models

Reg No.

**PDA882**

Ext Colour

**Black Diamond Pearl**

History

**NZ New, 3 owners**

Seats

**5 seats, Fabric**

CO2 Emissions

★★★★☆

**38 grams/km**

Energy Economy

★★★★☆

**Annual fuel cost not available  
1.6L per 100km**

Actual figures and cost per year will vary based on proportion of hybrid mode driving and battery charging schedule. Emissions and Energy Economy figures standardised to 3P WLTP.

**Stock ID: 5535**



Trust Motors Ltd | Phone 09 887 8668 | Email [george@trustmotors.co.nz](mailto:george@trustmotors.co.nz)  
10 Norman Spencer Drive, Papatoetoe, Auckland 2104, New Zealand  
[www.trustmotors.co.nz](http://www.trustmotors.co.nz)

