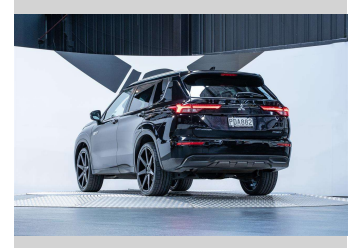


2022 Mitsubishi Outlander LS PHEV 2.4L 4WD



Purchase Price

\$42,990

Includes GST, Registration & Licensing

Finance may be available on this vehicle. Ask one of our friendly staff for more information.

finance
NOW

Gain peace of mind with Mechanical Breakdown Insurance. **Ask us how.**

Protecta
INSURANCE
an ASSURANT company

Top features

None Listed

Body Style

5 door, SUV / 4x4

Odometer

62,900 km

Engine

2360 cc, Plug-In Hybrid

Fuel Type

Plug-in hybrid

Transmission

Automatic, 4WD

Wheels

-

VIN

JMFXDGN0WNZ000231

Interior

Grey

Safety



Based on 2022 ANCAP rating for 21+ models

Reg No.

PDA882

Ext Colour

Black Diamond Pearl

History

NZ New, 3 owners

Seats

5 seats, Fabric

CO2 Emissions

★★★★☆

38 grams/km

Energy Economy

★★★★☆

**Annual fuel cost not available
1.6L per 100km**

Actual figures and cost per year will vary based on proportion of hybrid mode driving and battery charging schedule. Emissions and Energy Economy figures standardised to 3P WLTP.

Stock ID: 5535



Trust Motors Ltd | Phone 09 887 8668 | Email george@trustmotors.co.nz
10 Norman Spencer Drive, Papatoetoe, Auckland 2104, New Zealand
www.trustmotors.co.nz

