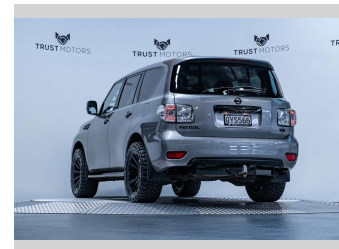
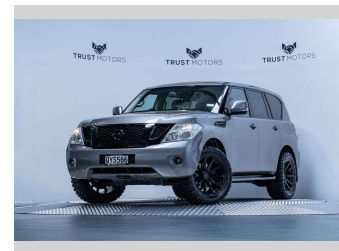
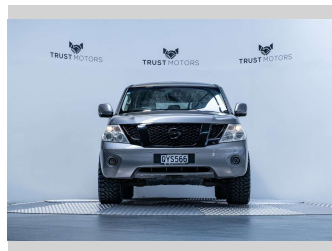
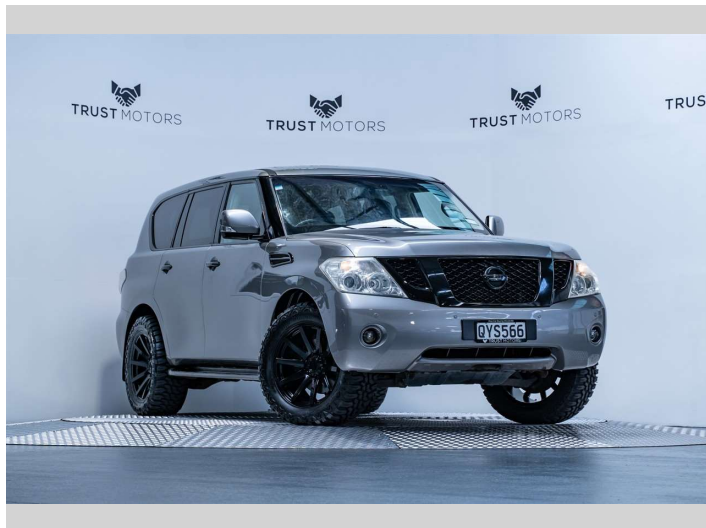


2013 Nissan Patrol 5.6L V8 4WD



Purchase Price **\$49,990**
Includes GST, Registration & Licensing

Finance may be available on this vehicle. Ask one of our friendly staff for more information.



Gain peace of mind with Mechanical Breakdown Insurance. **Ask us how.**



Top features
None Listed

Body Style
5 door, SUV / 4x4

Odometer
138,200 km

Engine
5552 cc, Internal Combustion

Fuel Type
Petrol

Transmission
Automatic, 4WD

Wheels
-

VIN
JN1TANY62A0000435

Interior
Black

Safety



Based on 2024 VSRR rating

Reg No.
QYS566

Ext Colour
Brilliant Silver

History
NZ New, 13 owners

Seats
8 seats, Leather

CO2 Emissions
☆☆☆☆☆☆
388 grams/km

Energy Economy
☆☆☆☆☆☆

Annual fuel cost of \$6,350
16.2L per 100km

Cost per year is an estimate based on petrol price of \$2.80 per litre and an average distance of 14000 km. Emissions and Energy Economy figures standardised to 3P WLTP.

Stock ID: 6094



Trust Motors Ltd | Phone 09 887 8668 | Email george@trustmotors.co.nz
10 Norman Spencer Drive, Papatoetoe, Auckland 2104, New Zealand
www.trustmotors.co.nz

