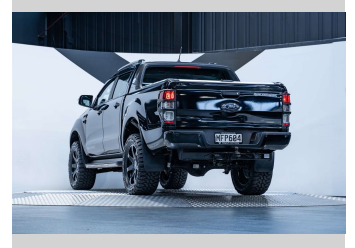
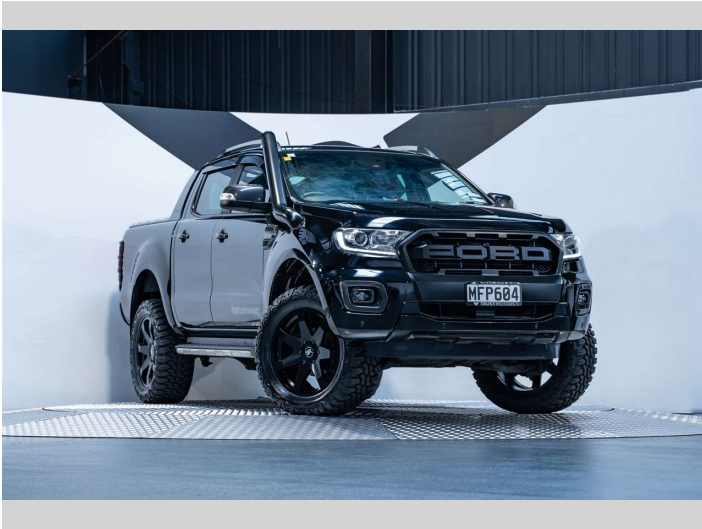



2019 Ford Ranger Wildtrak 2.0L Bi-Turbo 4WD PX-3




Purchase Price **\$47,990**
Includes GST, Registration & Licensing

Finance may be available on this vehicle. Ask one of our friendly staff for more information.



Gain peace of mind with Mechanical Breakdown Insurance. **Ask us how.**



Top features
None Listed

Body Style
4 door, Ute

Odometer
94,000 km

Engine
1996 cc, Internal Combustion

Fuel Type
Diesel

Transmission
Automatic, 4WD

Wheels
-

VIN
MPBUMFF60KX224477

Interior
Black

Safety


Based on 2024 VSRR rating

Reg No.
MFP604

Ext Colour
Shadow Black

History
NZ New, 1 owner

Seats
5 seats, Leather

CO2 Emissions
★★★☆☆☆
225 grams/km

Energy Economy
★★☆☆☆☆

Annual fuel cost of \$3,440
8.5L per 100km

Cost per year is an estimate based on diesel price of \$2.00 per litre and an average distance of 14000 km. Includes Road User Charges (RUC). Emissions and Energy Economy figures standardised to 3P WLTP.

Stock ID: 5973



Trust Motors Ltd | Phone 09 887 8668 | Email george@trustmotors.co.nz
10 Norman Spencer Drive, Papatoetoe, Auckland 2104, New Zealand
www.trustmotors.co.nz

