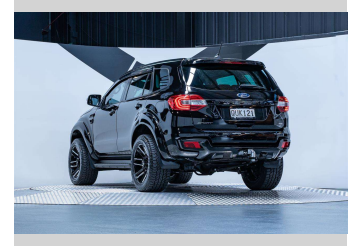


2022 Ford Everest Sport 2.0L Bi-Turbo 4WD



Purchase Price **\$55,990**
Includes GST, Registration & Licensing

Finance may be available on this vehicle. Ask one of our friendly staff for more information.



Gain peace of mind with Mechanical Breakdown Insurance. **Ask us how.**



Top features

None Listed

Body Style
5 door, SUV / 4x4

Odometer
34,700 km

Engine
1996 cc, Internal Combustion

Fuel Type
Diesel

Transmission
Automatic, 4WD

Wheels
-

VIN
MNAAXXMAWANT11879

Interior
Black

Safety



Based on 2023 VSRR rating

Reg No.
QUK121

Ext Colour
Shadow Black

History
NZ New, 2 owners

Seats
7 seats, Leather

CO2 Emissions
★★★★☆
209 grams/km

Energy Economy
★★★★☆


Annual fuel cost of \$3,330
8.1L per 100km

Cost per year is an estimate based on diesel price of \$2.00 per litre and an average distance of 14000 km. Includes Road User Charges (RUC). Emissions and Energy Economy figures standardised to 3P WLTP.

Stock ID: 5475



Trust Motors Ltd | Phone 09 887 8668 | Email george@trustmotors.co.nz
10 Norman Spencer Drive, Papatoetoe, Auckland 2104, New Zealand
www.trustmotors.co.nz



★★★★★
4.91 | 1286 reviews