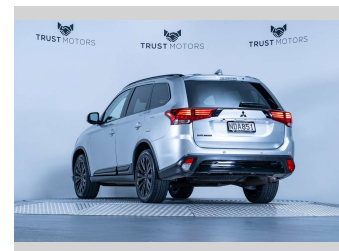
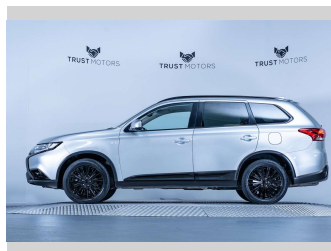
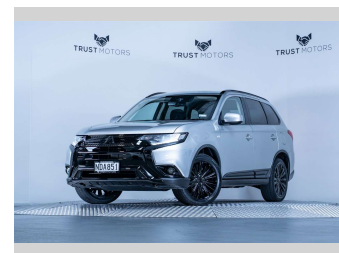
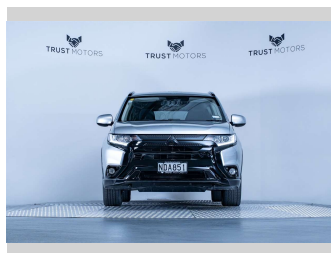
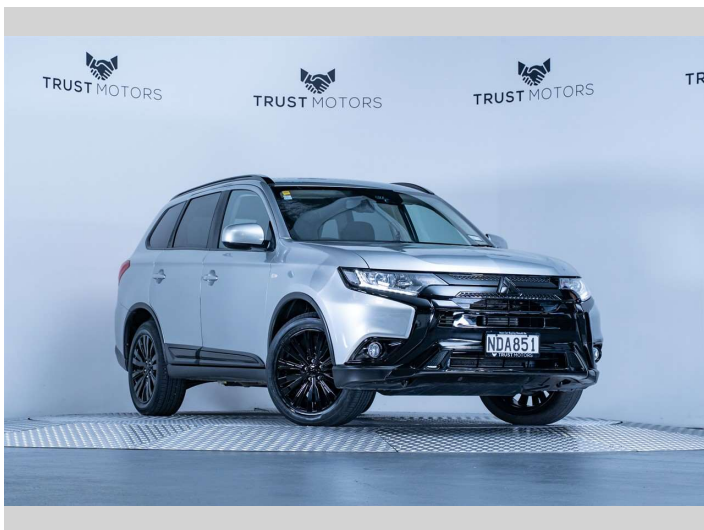



2020 Mitsubishi Outlander LS 2.4L 4WD




Purchase Price **\$25,990**
Includes GST, Registration & Licensing

Finance may be available on this vehicle. Ask one of our friendly staff for more information.



Gain peace of mind with Mechanical Breakdown Insurance. **Ask us how.**



Top features
None Listed

Body Style
5 door, SUV / 4x4

Odometer
112,400 km

Engine
2360 cc, Internal Combustion

Fuel Type
Petrol

Transmission
Automatic, 4WD

Wheels
-

VIN
JMFXTGF8WLZ013748

Interior
Black

Safety
-

Reg No.
NDA851

Ext Colour
Cool Silver Metallic

History
NZ New, 2 owners

Seats
7 seats, Fabric

CO2 Emissions
-

Energy Economy
-

Stock ID: 6790



Trust Motors Ltd | Phone 09 887 8668 | Email george@trustmotors.co.nz
10 Norman Spencer Drive, Papatoetoe, Auckland 2104, New Zealand
www.trustmotors.co.nz

