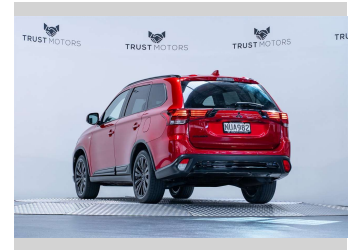
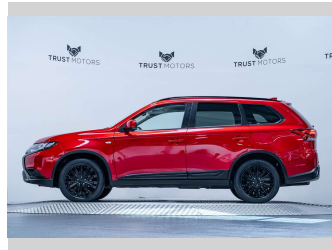
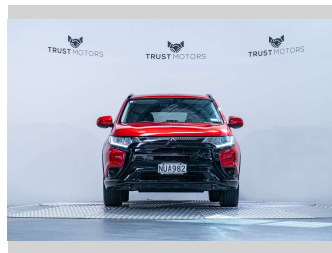
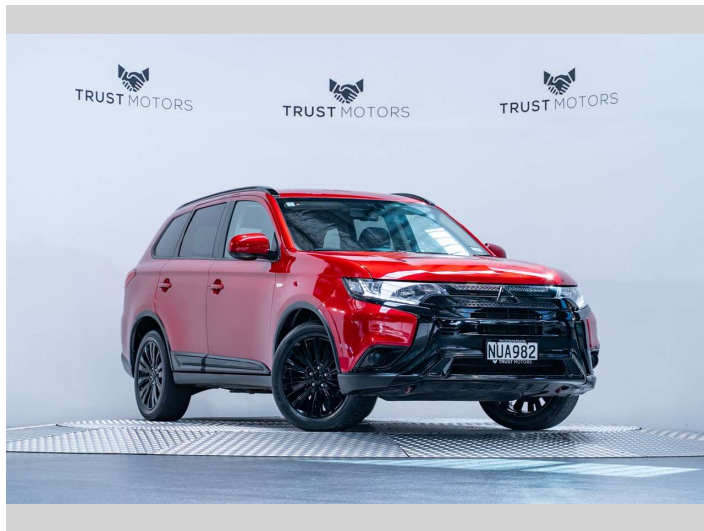



# 2021 Mitsubishi Outlander LS 2.4L Petrol




**Purchase Price** **\$26,990**  
Includes GST, Registration & Licensing

Finance may be available on this vehicle. Ask one of our friendly staff for more information.



Gain peace of mind with Mechanical Breakdown Insurance. **Ask us how.**



**Top features**  
None Listed

**Body Style**  
5 door, SUV / 4x4

**Odometer**  
57,400 km

**Engine**  
2360 cc, Internal Combustion

**Fuel Type**  
Petrol

**Transmission**  
Automatic

**Wheels**  
-

**VIN**  
JMFXTGF8WLZ027353

**Interior**  
Black

**Safety**  


Based on 2024 UCSR rating for 12-21 models

**Reg No.**  
NUA982

**Ext Colour**  
Red Diamond

**History**  
NZ New, 2 owners

**Seats**  
7 seats, Fabric

**CO2 Emissions**  
★★★★☆  
186 grams/km

**Energy Economy**  
★★☆☆☆☆

**Annual fuel cost of \$3,140**  
8L per 100km

Cost per year is an estimate based on petrol price of \$2.80 per litre and an average distance of 14000 km. Emissions and Energy Economy figures standardised to 3P WLTP.

**Stock ID: 6623**



Trust Motors Ltd | Phone 09 887 8668 | Email george@trustmotors.co.nz  
10 Norman Spencer Drive, Papatoetoe, Auckland 2104, New Zealand  
www.trustmotors.co.nz

