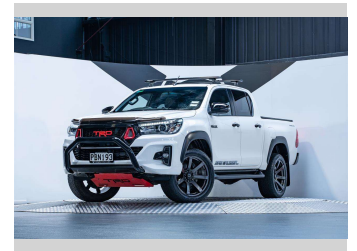
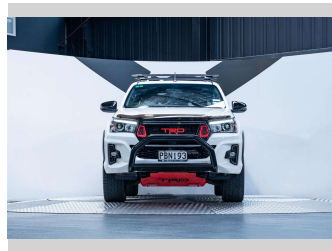
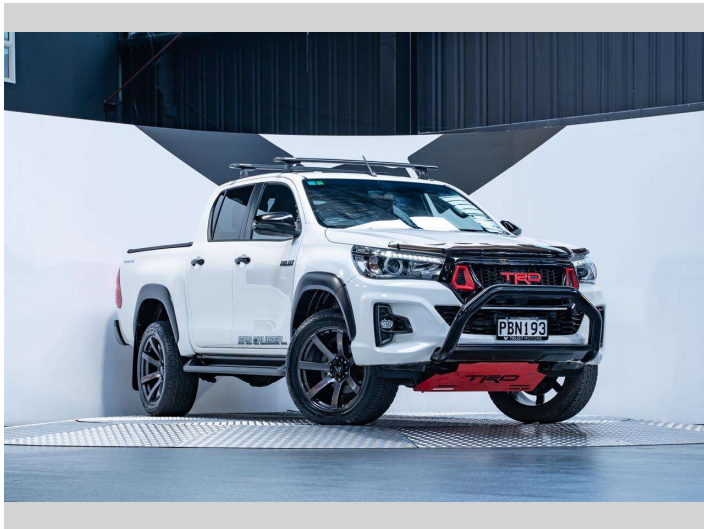


# 2018 Toyota Hilux SR5 Cruiser 2.8L Automatic



**Purchase Price** **\$39,990**  
Includes GST, Registration & Licensing

Finance may be available on this vehicle. Ask one of our friendly staff for more information.



Gain peace of mind with Mechanical Breakdown Insurance. **Ask us how.**



**Top features**

None Listed

Body Style  
**4 door, Ute**

Odometer  
**70,300 km**

Engine  
**2755 cc, Internal Combustion**

Fuel Type  
**Diesel**

Transmission  
**Automatic**

Wheels  
-

VIN  
**MR0GA3DD900263194**

Interior  
**Black**

Safety



Based on 2023 UCSR rating for 15-19 models

Reg No.  
**PBN193**

Ext Colour  
**Glacier White**

History  
**NZ New, 6 owners**

Seats  
**5 seats, Leather**

CO2 Emissions  
★ ★ ☆ ☆ ☆ ☆  
**244 grams/km**

Energy Economy  
★ ★ ☆ ☆ ☆ ☆

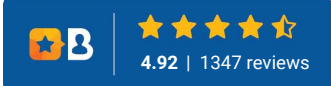
**Annual fuel cost of \$3,670**  
**9.3L per 100km**

Cost per year is an estimate based on diesel price of \$2.00 per litre and an average distance of 14000 km. Includes Road User Charges (RUC). Emissions and Energy Economy figures standardised to 3P WLTP.

**Stock ID: 5731**



Trust Motors Ltd | Phone 09 887 8668 | Email [george@trustmotors.co.nz](mailto:george@trustmotors.co.nz)  
10 Norman Spencer Drive, Papatoetoe, Auckland 2104, New Zealand  
[www.trustmotors.co.nz](http://www.trustmotors.co.nz)



4.92 | 1347 reviews