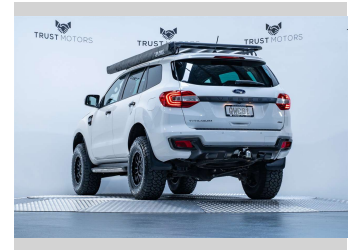
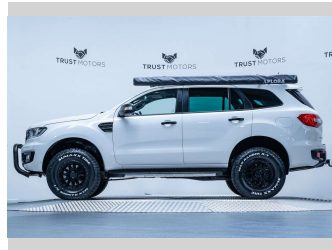
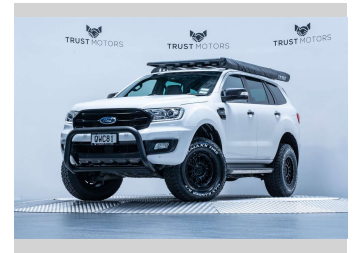
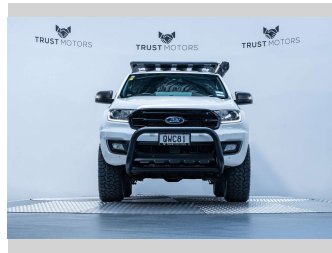


# 2019 Ford Everest Titanium 2.0L Bi-Turbo 4WD



**Purchase Price** **\$49,990**  
Includes GST, Registration & Licensing

Finance may be available on this vehicle. Ask one of our friendly staff for more information.



Gain peace of mind with Mechanical Breakdown Insurance. **Ask us how.**



**Top features**  
None Listed

**Body Style**  
4 door, SUV / 4x4

**Odometer**  
95,100 km

**Engine**  
1996 cc, Internal Combustion

**Fuel Type**  
Diesel

**Transmission**  
Automatic, 4WD

**Wheels**  
-

**VIN**  
MNAAXXMAWAKT43066

**Interior**  
Black

**Safety**



Based on 2024 VSRR rating

**Reg No.**  
QWC81

**Ext Colour**  
Arctic White

**History**  
NZ New, 8 owners

**Seats**  
7 seats, Leather

**CO2 Emissions**  
★★★★☆  
209 grams/km

**Energy Economy**  
★★★★☆☆  
Annual fuel cost of \$3,330  
8.1L per 100km

Cost per year is an estimate based on diesel price of \$2.00 per litre and an average distance of 14000 km. Includes Road User Charges (RUC). Emissions and Energy Economy figures standardised to 3P WLTP.

**Stock ID: 6279**



Trust Motors Ltd | Phone 09 887 8668 | Email george@trustmotors.co.nz  
10 Norman Spencer Drive, Papatoetoe, Auckland 2104, New Zealand  
www.trustmotors.co.nz

