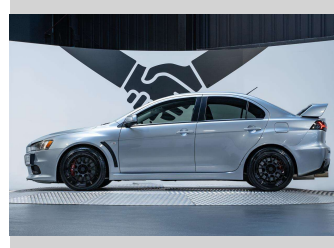
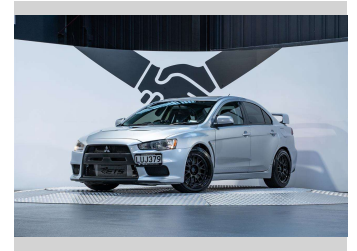
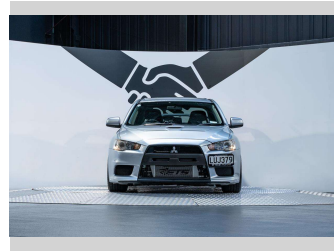
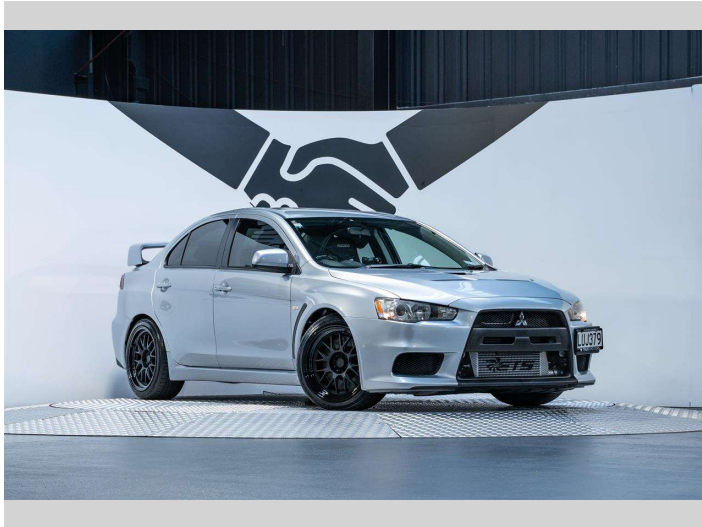


# 2009 Mitsubishi Lancer Evolution X 2.0L Manual



Purchase Price

**\$44,990**

Includes GST, Registration & Licensing

Finance may be available on this vehicle. Ask one of our friendly staff for more information.

finance  
**NOW**

Gain peace of mind with Mechanical Breakdown Insurance. **Ask us how.**

**Protecta**  
INSURANCE  
an ASSURANT company

## Top features

None Listed

Body Style

**4 door, Sedan**

Odometer

**88,400 km**

Engine

**1990 cc, Internal Combustion**

Fuel Type

**Petrol**

Transmission

**Manual, 4WD**

Wheels

-

VIN

**7AT0CJ0DX18000736**

Interior

**Black**

Safety

-

Reg No.

**LUJ379**

Ext Colour

**Silver**

History

**Ex-Overseas, 8 owners**

Seats

**5 seats, Fabric**

CO2 Emissions

-

Energy Economy

-

**Stock ID: 5439**



Trust Motors Ltd | Phone 09 887 8668 | Email [george@trustmotors.co.nz](mailto:george@trustmotors.co.nz)  
10 Norman Spencer Drive, Papatoetoe, Auckland 2104, New Zealand  
[www.trustmotors.co.nz](http://www.trustmotors.co.nz)



★★★★★  
4.92 | 1278 reviews