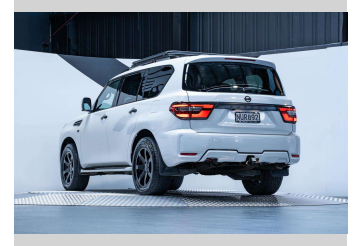


# 2021 Nissan Patrol TI-L 5.8L V8 4WD



Purchase Price

**\$77,990**

Includes GST, Registration & Licensing

Finance may be available on this vehicle. Ask one of our friendly staff for more information.



Gain peace of mind with Mechanical Breakdown Insurance. **Ask us how.**



## Top features

None Listed

Body Style

**5 door, SUV / 4x4**

Odometer

**93,100 km**

Engine

**5552 cc, Internal Combustion**

Fuel Type

**Petrol**

Transmission

**Automatic, 4WD**

Wheels

-

VIN

**JN1TANY62A0154506**

Interior

**Black**

Safety



Based on 2023 VSRR rating

Reg No.

**NUR892**

Ext Colour

**Moonstone White**

History

**NZ New, 2 owners**

Seats

**8 seats, Leather**

CO2 Emissions

☆☆☆☆☆☆

**373 grams/km**

Energy Economy

☆☆☆☆☆☆

**Annual fuel cost of \$6,350**

**16.2L per 100km**

Cost per year is an estimate based on petrol price of \$2.80 per litre and an average distance of 14000 km. Emissions and Energy Economy figures standardised to 3P WLTP.

**Stock ID: 5493**



Trust Motors Ltd | Phone 09 887 8668 | Email [george@trustmotors.co.nz](mailto:george@trustmotors.co.nz)  
10 Norman Spencer Drive, Papatoetoe, Auckland 2104, New Zealand  
[www.trustmotors.co.nz](http://www.trustmotors.co.nz)

